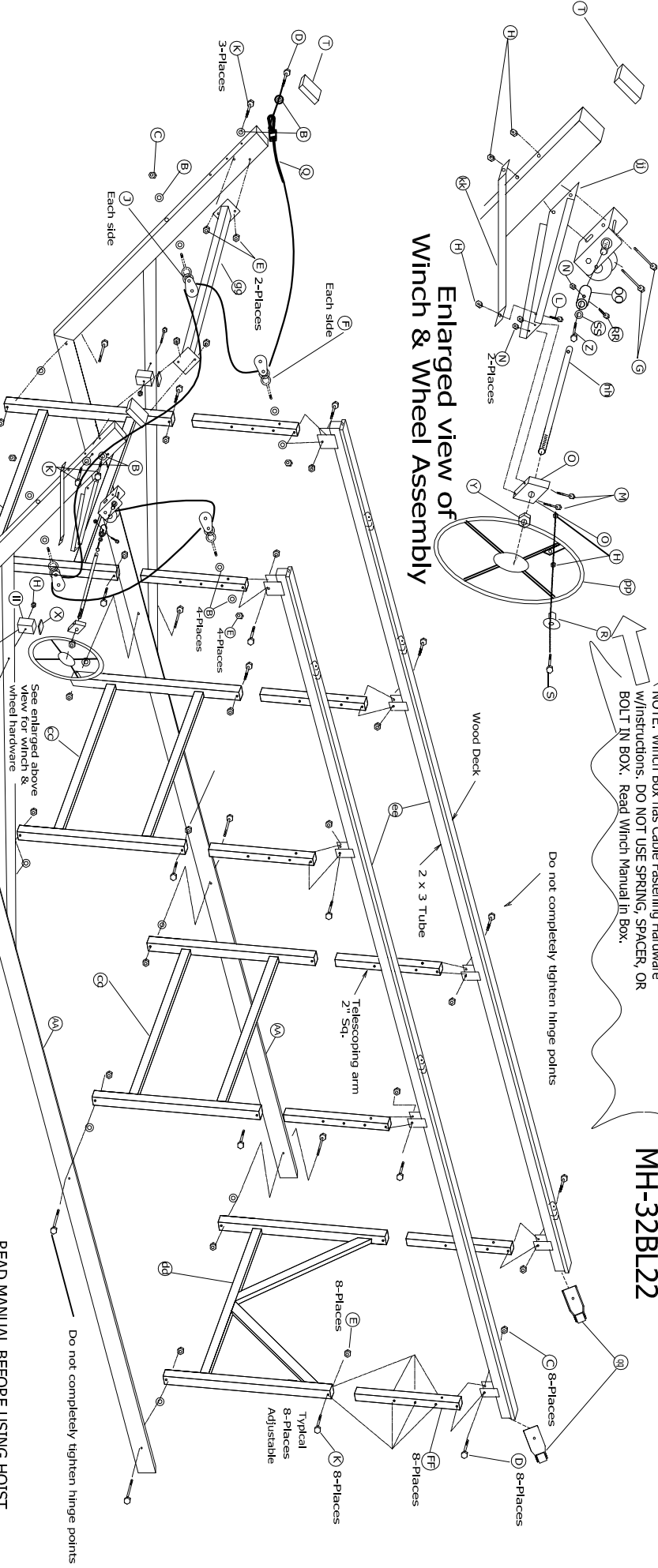


MH-32BL22

Enlarged view of Winch & Wheel Assembly

NOTE: Winch Box has Cable Fastening Hardware w/Instructions. DO NOT USE SPRING, SPACER, OR BOLT IN BOX. Read Winch Manual in Box.

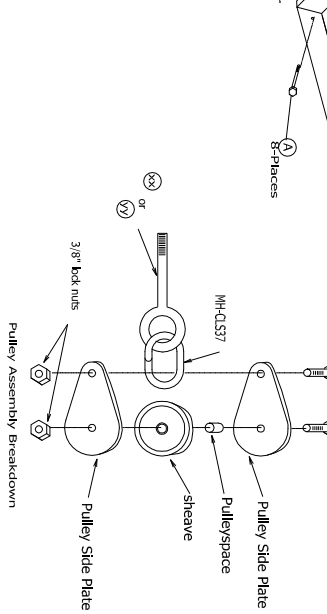
Do not completely tighten hinge points



MH-32BL22 Parts List

| Item | Quantity | Description | Part Number |
|------|----------|--------------------|-------------|
| A | 20 | 1/2 Flat Washer | H-850550 |
| B | 16 | 1/2 Lock Nut | H-NL50 |
| C | 9 | 1/2 x 3 1/4 Bolt | H-850325 |
| D | 16 | 1/2 Nut | H-N50 |
| E | 2 | 3/8 x 6 Bolt Nut | H-827900 |
| F | 2 | 1/2 x 3 Bolt | H-850300 |
| G | 1 | 3/8 x 1 Bolt | H-837100 |
| H | 2 | 5/16 x 3 1/2 Bolt | H-831350 |
| I | 2 | 5/16 x 3 Bolt | H-NL100 |
| J | 1 | 3/8 x 1 Bolt | H-850300 |
| K | 2 | 3/8 x 2 1/2 Bolt | H-837250 |
| L | 2 | Square plastic cap | H-PQR2050 |
| M | 1 | 5/8 x 1/2 Nut | H-835200 |
| N | 1 | 5/16 x 2 Bolt | H-831200 |
| O | 1 | 5/16 Washer | H-W53 |

| Item | Quantity | Description | Part Number |
|------|----------|-------------------------------|-------------|
| aa | 2 | Side panel | MH-2725P |
| ab | 3 | Front of Hoist Pontoon Stand | MH-FHS |
| ac | 1 | Rear Pontoon Stand | MH-RHS |
| ad | 1 | Hoist Stand | MH-HS |
| ae | 8 | Pontoon Stand Extension | MH-FSE |
| af | 8 | Pontoon Stand Extension | MH-RSE |
| ag | 1 | Pontoon Spreader arm | MH-FS |
| ah | 1 | Pontoon winch extension shaft | MH-FOWNS |
| ai | 1 | Pontoon winch arm base | MH-FOWNA |
| aj | 1 | Pontoon start hub | MH-FSH |
| ak | 1 | Pontoon start back | MH-FSB |
| al | 1 | Pontoon start back | MH-FSB |
| am | 1 | 90° Winch | MH-WHEE-90 |
| an | 1 | 1 5/8 Pontoon start Hub | MH-FOWNH |
| ao | 4 | 3 Bore Pulley Assembly | MH-FAL |
| ap | 6 | Pontoon cable | MH-FALBBOX |
| aq | 1 | Pontoon lift cable | MH-FALC |
| ar | 1 | 1500 LB Winch | MH-VINC1500 |
| as | 2 | 3/8 Cable Links | MH-CL37 |
| at | 4 | 3/8 Cable Links | MH-FEL2 |
| au | 1 | 1/2 Long Welded eye link | MH-LV50 |
| av | 2 | 1/2 Long Welded eye link | MH-LV50 |



Manual, parts list and drawing on the web WWW.CRAFTLANDER.COM

READ MANUAL BEFORE USING HOIST.

| | | | | | |
|-----------|----------|-----------------|-----------|------|-------------|
| Revised # | Date | Description | Revised # | Date | Description |
| | 11/26/04 | Revised Lists | | | |
| | 7/13/05 | replaced Winch | | | |
| | 2/20/08 | Revised Dwg No. | | | |

NuCraft
Metal Products
402 S. Line Rd.
Roscommon, MI 48653

Scaler: None

Date: 11/26/04

Approved by: **RLW**

Drawn by: **RLW**

Revised by: Rachel W

MH-32BL22, Pontoon Hoist
Hoist Components & Hardware

Assembly & Parts List

Drawing Number
MH-32BL22