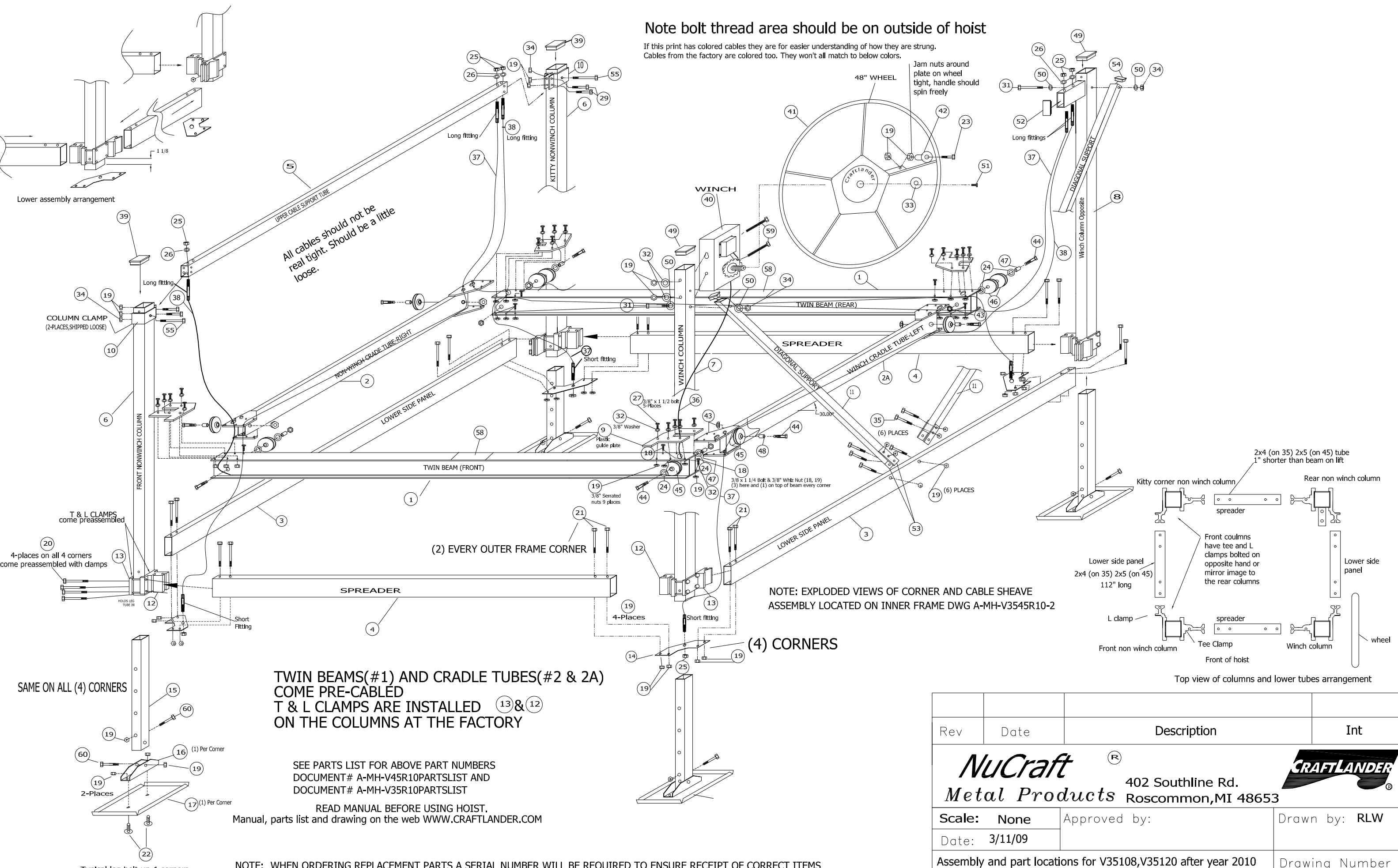


Note bolt thread area should be on outside of hoist

If this print has colored cables they are for easier understanding of how they are strung. Cables from the factory are colored too. They won't all match to below colors.

Jam nuts around plate on wheel tight, handle should spin freely



All cables should not be real tight. Should be a little loose.

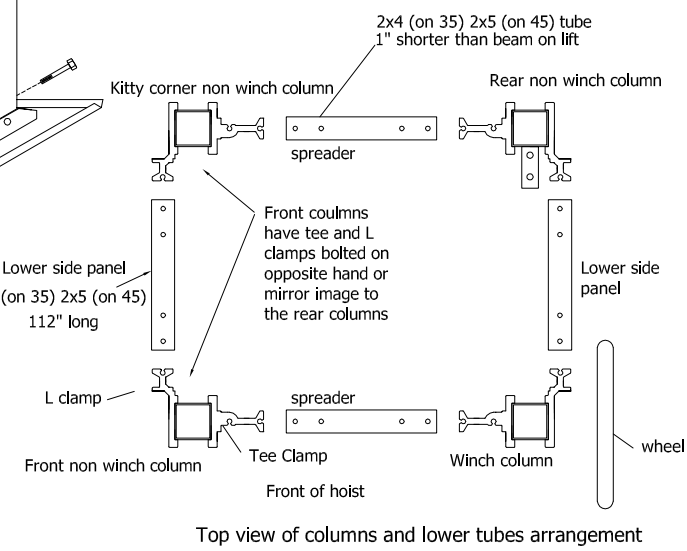
NOTE: EXPLODED VIEWS OF CORNER AND CABLE SHEAVE ASSEMBLY LOCATED ON INNER FRAME DWG A-MH-V3545R10-2

TWIN BEAMS (#1) AND CRADLE TUBES (#2 & 2A) COME PRE-CABLED
T & L CLAMPS ARE INSTALLED (13) & (12) ON THE COLUMNS AT THE FACTORY

SEE PARTS LIST FOR ABOVE PART NUMBERS
DOCUMENT# A-MH-V45R10PARTSLIST AND
DOCUMENT# A-MH-V35R10PARTSLIST

READ MANUAL BEFORE USING HOIST.
Manual, parts list and drawing on the web WWW.CRAFTLANDER.COM

NOTE: WHEN ORDERING REPLACEMENT PARTS A SERIAL NUMBER WILL BE REQUIRED TO ENSURE RECEIPT OF CORRECT ITEMS



Top view of columns and lower tubes arrangement

Rev	Date	Description	Int
		<p>NuCraft [®] Metal Products</p> <p>402 Southline Rd. Roscommon, MI 48653</p> 	
Scale: None	Date: 3/11/09	Approved by:	Drawn by: RLW
Assembly and part locations for V35108, V35120 after year 2010 V45108, V45114, & V45120 after year 2009			Drawing Number A-MH-V3545R10