



Pontoon Assembly Manual

Read before using hoist

For Models 32BL18, 32BL22, 32BL25 and 42BL28



Model 42BL25 Shown

Proudly Made in Michigan
By
NuCraft Metal Products
402 Southline Rd.
Roscommon, MI 48653

Rev 8/13/09

This manual has been created to help you in the assembly process. Every effort has been made to simplify the process. Should you have any questions please contact your dealer for help. If needed the dealer will contact the factory and have one of our experts call and assist you.

Please read this manual completely before beginning. This will help you get an understanding of how best to complete the job.

Make sure you have all needed tools before you begin. It will cut down on the frustration level! (see list below)

This hoist can be put together by yourself, however we recommend you enlist the help of a friend.

If you have purchased an optional power assist ask your dealer for installation instructions. Improper installation may result in hoist failure and possible personal injury.

Tool List: 3/8, 1/2, 9/16 wrenches -3/8" drive sockets of same size-3/8" drive ratchet and 4" extension-regular and phillips screwdrivers-hammer-adjustable pliers and wrench (1-1/4" open end wrench works too). If you have a well stocked tool box you probably have what's needed in sets.

Craftlander Pontoon Lift in use.

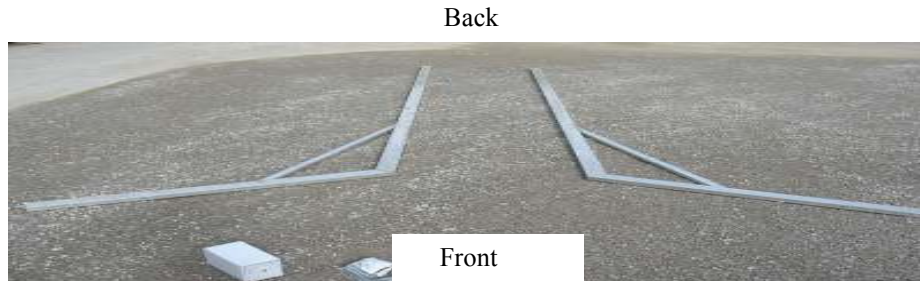


The photos in this manual are those of a 32BL25. The quantity of parts for your hoist may vary depending on the model purchased. The assembly process is the same for all Craftlander Pontoon Hoists.

Pontoon Assembly Instructions

A 32BL25 is shown, the number of parts required for your hoist will vary depending on model purchased.

Layout all parts to make sure you have everything needed to assemble your hoist. Refer to the assembly drawing in the bolt bag for parts list. Once you have done this find a level spot to put the hoist together. Lay the 2 side panels on the ground as shown.

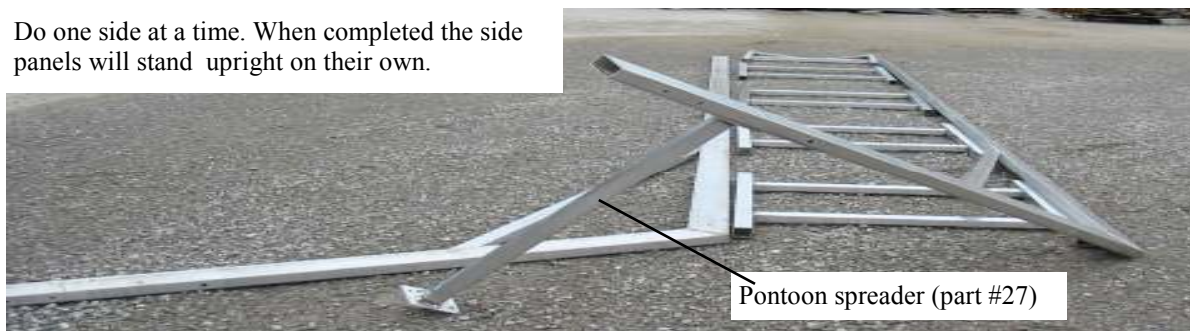


Next lay the pontoon stands between the side panels making sure the stand with the “V” shape is the one in the back as shown in the picture below. Note: Back “V” stand V shape points down. Other stands can be installed either end up.



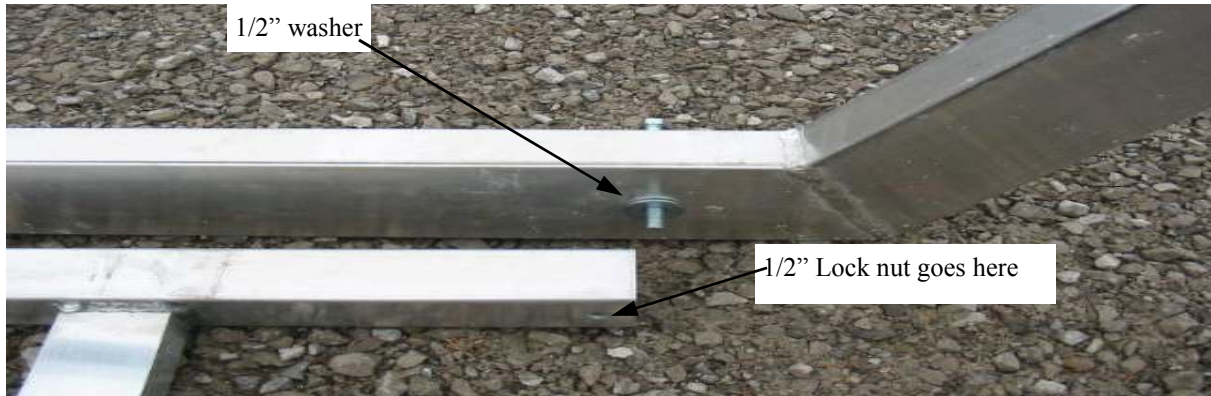
Once this is done find the pontoon spreader (part #27) four $\frac{1}{2}$ ” x 3” bolts, four $\frac{1}{2}$ ” flat washers and four $\frac{1}{2}$ ” nuts. Place the spreader between the side panel uprights and align the bolt holes in the spreader with the ones on the upright portion of the side panels. Put the $\frac{1}{2}$ ” flat washers on the bolt then insert thru the side panel and spreader putting the $\frac{1}{2}$ ” nut on the inside. Finger tighten the nuts as you will be removing some of them later on.

Do one side at a time. When completed the side panels will stand upright on their own.

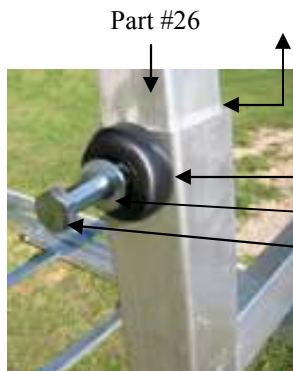


Next get the 1/2" x 5 1/2" hex head bolts, 1/2" flat washers and 1/2" lock nuts from the bolt bag. These are used to bolt the stands to the side panels. Two of each required for every stand. Washers go behind side panel stand.

Insert the 1/2" x 5 1/2" bolt thru the side panel then put the washer on before inserting the bolt thru the stand. Install the 1/2" lock nut hand tight only. Repeat this procedure for all the stands.



Now find the pontoon stand extensions (part #26), two are required for each stand. You will need 1/2" x 3" hex head bolts, nylon bolt protectors (#42) and 1/2" nuts. One of each per extension.



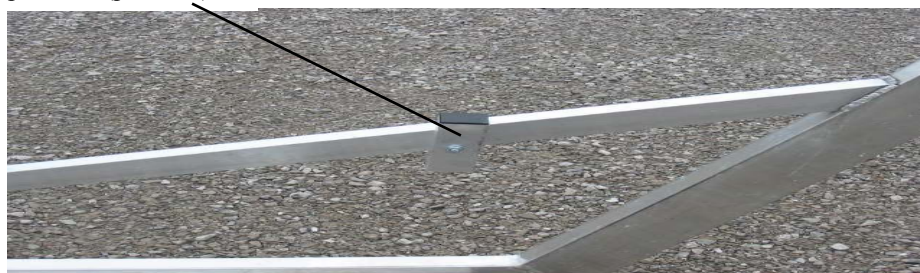
The distance from the top of the stand extension to the top of the stand must be equal on all stands. These are adjustable, check your water depth.

- Part #42 Nylon 1/2" Bolt Protector
- Part #43 1/2" ZSAE Washer (Note: this washer is smaller in diameter than the standard 1/2" Washer)
- Part #8 1/2" x 3" Bolt

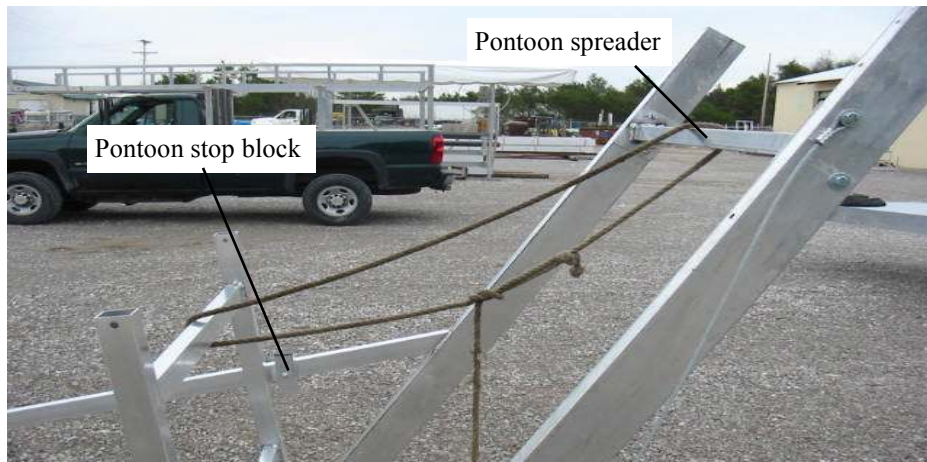
Make sure the distance between from the top of the stand to the top of the stand extensions is the same otherwise you won't be able to properly install the pontoon rails. Insert the 1/2" x 3" bolt and the nylon bolt protectors thru from the outside, install and tighten the 1/2"

Locate the two pontoon stop blocks (part #31), two 3/8" x 4" hex head bolts and two 3/8" whiz nuts (they are the ones that have a serrated washer attached). Install the blocks, bolts and whiz nuts as shown.

Pontoon stop blocks (part #31)



Locate the pontoon rails (part #25), 1/2" x 3 1/2" hex head bolts, nylon bolt protectors with 1/2" ZSAE washers and 1/2" lock nuts. Two of each needed for every stand. Raise the front stand until it touches the pontoon stop blocks, tie off with rope to the pontoon spreader. Leave the other stands flat on the ground until later.



Place the front of the pontoon rail on the front stand as shown. The front of the rail is the end with the aluminum plates welded closest to the end. Align with the holes in the pontoon stand extension, insert the 1/2" x 3 1/2" bolt, the nylon bolt protectors with 1/2" ZSAE washers thru the rail clips and extension from the outside, hand tighten the 1/2" lock nut. Repeat this for the other rail.



Lift the back of the pontoon rail up and swing the rear stand up until the holes in the stand align with the holes in the pontoon rail. Bolt the rails and stand together as you did in the last step. When finished your hoist will look like the picture below.



Swing the remaining stands up and align the holes, inserting the 1/2" x 3 1/2" bolts, nylon bolt protectors, 1/2" ZSAE washers and 1/2" lock nuts as you go. When finished your hoist will look like the picture. (Remember, the total amount of stands needed for your hoist will vary depending on the model purchased.)

42BL25 shown



You are now ready to install the winch/wheel assembly. Begin by laying out all the parts. (Refer to the component drawing for part names and quantities)



Pontoon arm and brace



Pontoon block



DL Winch



Shaft hub and extension shaft



30" Wheel

Attach the pontoon arm brace to the narrow end of the pontoon arm with a 3/8" x 1" hex head bolt and 3/8" whiz nut. Refer to the picture below.



Locate two 5/16 x 3 1/2 hex head bolts, two 5/16" lock nuts and the black plastic pontoon block. Attach as shown and tighten. Now locate the two 3/8" x 6" hex head bolts and two 3/8" whiz nuts. Place the pontoon arm on the side panel upright and insert the bolts from the back side. You can put the wheel on either side as needed. Make sure you put one of the bolts thru the brace. Mount the winch by putting one of the bolts thru the slot on the back side of the winch and the other thru the center of the three holes. Install the whiz nuts and tighten. Refer to pictures on next page for winch installation.





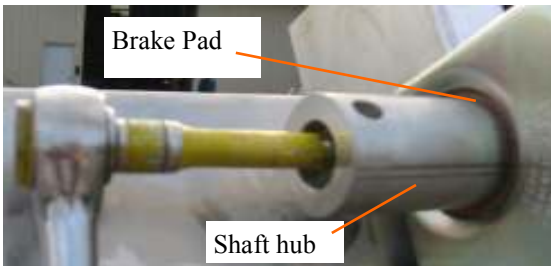
Pontoon arm installation.



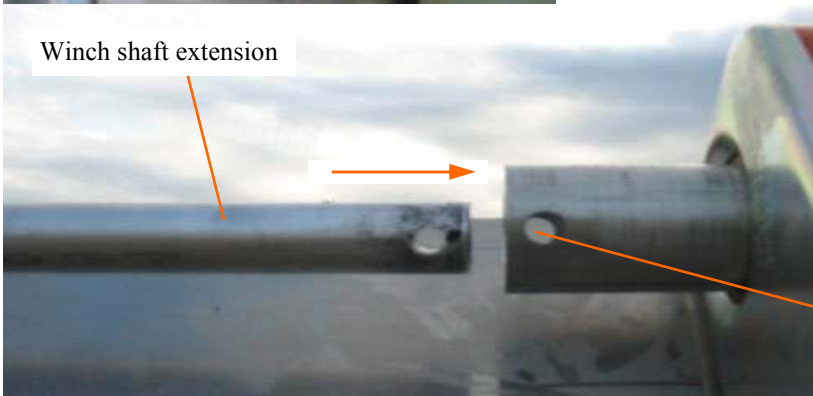
Winch installation.

Bolt tightening procedure.

Make sure threaded shaft faces same direction as pontoon arm.



Thread shaft hub as shown making sure the cross drilled hole faces away from the winch. Tighten hub until it comes in contact with the brake pad. Use the 5/16" x 1/2" hex head bolt and 5/16" flat washer to secure the hub to the winch shaft. Put bolt & washer inside of shaft hub and tighten to winch. Do not use spring, washer, bolt or steel spacer that comes in winch box.



Slide winch shaft extension thru black pontoon block on end of pontoon arm and insert into shaft hub as shown. Use one 5/16" x 2" hex head bolt and 5/16" lock nut to secure shaft to hub. Tighten with socket and wrench.

5/16" x 2"
Bolt goes thru here.



Install 7/8" jam nut on shaft then thread 30" wheel on being careful nut to go to far so shaft breaks thru decal. Hold wheel and use adjustable pliers or a 1-1/4" wrench to tighten jam nut against wheel hub. This prevents the wheel from spinning off when lowering hoist. (You can't over tighten!)

Next find the two 1/2" x 4" and two 1/2" x 6" eye bolts with pulley's attached, pontoon lift cable, four 1/2" lock nuts and four 1/2" flat washers. You will also need the small package of a bolt and clamp that came with the winch.



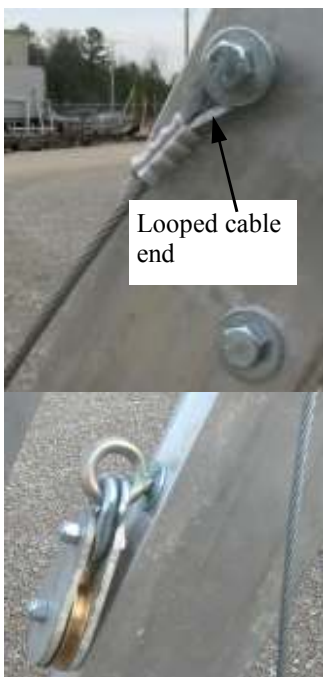
Eye bolt



Lift cable



Cable clamp & bolt



Remove the top spreader bolt opposite the winch side and slide looped cable end over the bolt and reinstall. Let the other end of the cable fall on the ground. Next install the two 1/2" x 6" pulley assemblies on the side panel upright by sliding a 1/2" flat washer then put thru holes in upright using another flat washer and a 1/2" lock nut, hand tighten only. Repeat this for the other side. Now install the 1/2" x 4" pulley assemblies on the front stand using the same procedure as on the other pulleys. Refer to the pictures below and the component drawing as needed.



Side panel upright pulley installation
1/2 x 6 Pulley Assemblies

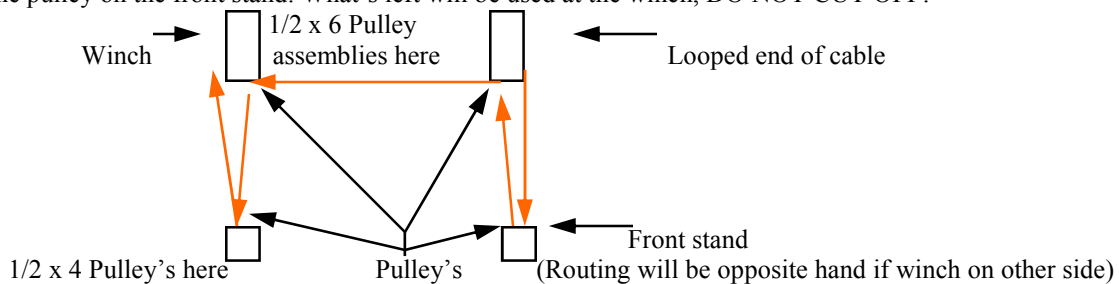


Front stand pulley installation
1/2 x 4 Pulley Assemblies



Cable feeds straight thru pulley and not twisted. Refer to picture above. If twisted, hoist may not work properly.

To route the lift cable, do the following: Thread the end of the cable thru the pulley attached to the front stand then back to the pulley on the side panel upright. Go across to the other pulley on the side panel upright then to the pulley on the front stand. What's left will be used at the winch, DO NOT CUT OFF!



Before attaching cable to winch stretch it out to check for any kinks and to make sure it's not tangled.

Step 1



Install the cable clamp assembly using the square hole on the side of the winch. Only thread nut on just far enough to prevent clamp from coming off. Put free end of cable thru hole in side of winch below the clamp push cable thru one side of the clamp, make a large loop then push cable back thru the other side of the clamp. Carefully pull the loop out as shown in step 4. Leave the end about 1" beyond the clamp then tighten securely. Sometimes it's difficult to do this, be patient and it will work.

Step 2



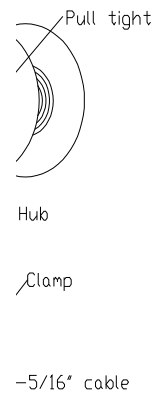
Step 3



Step 4



Step 5



Now grab the cable with a gloved hand and turn the wheel in the up (clockwise) direction. Guide the cable across the cable drum making sure one strand doesn't overlap another. When you have reached the other side of the cable drum the cable will start winding itself back to the opposite side. Continue to guide the cable until all excess cable has been wound up in the winch. The cable should now be tight at the pulleys.

It's time to tighten all the bolts that you left finger tight during the assembly process. Start at the winch/wheel assembly continuing on to the spreader then the pulleys. Do not tighten the bolts so much that they bend the aluminum tubes. The bolts that attach the pontoon stands to the side panels should only be snug as they are a pivot point and need to be free enough to operate properly. Same goes for the bolts that attach the pontoon rails to the stand extensions. When you get to the back of the hoist stop and operate the winch up and down to make sure everything works ok. Recheck all bolts for proper tightness. The last thing to do is to install the pontoon rollers in the pontoon rails. Refer to the next page for the proper procedure.



The picture shown on the left is that of the end of the a side panel. The rollers at the end are intended to help prevent damage to your pontoon while putting your boat on and off the hoist. Use extreme caution during these operations. First time users should seek experienced help.

Congratulations you have successfully assembled one of the finest pontoon lifts on the market. Your Craftlander hoist has been constructed for years of trouble free use. Some simple maintenance steps is all that is needed.

- 1). Inspect the lift cable for fraying or any other damage every time you use your hoist.
- 2). Check pulleys for proper operation.
- 3). Check bolt tightness and wear. Retighten or replace as needed.
- 4). Inspect the wood on the top of the pontoon rails, replace as needed.
- 5). Operate the winch up and down to check for proper operation.

The above steps should be done every time you use your hoist and before you put your hoist in the water in the spring and when you take it out in the fall.

DO NOT RAISE OR LOWER HOIST WITH PEOPLE ON THE PONTOON BOAT

Overloading will result causing serious damage to the hoist and your boat.

This hoist is only intended to support your boat. Do not allow people on board when hoist is in use.

If you have any questions or need replacement parts please contact your dealer for help.

These stickers are similar to ones on the hoist wheel and column. Wheel brake works when cranking in the up direction only.

Stickers say:

Failure to follow below instructions will result in **uncontrolled spin down** and possible **personal injury** and or hoist damage.

Lift wheel must be turned clockwise for lifting. Do not raise hoist by turning wheel counter clockwise/down direction.

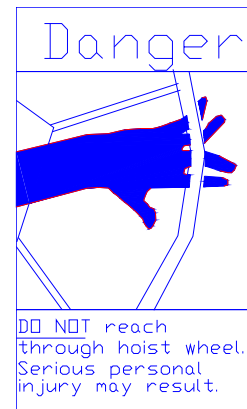
Possible personal injury and or hoist damage may result.

DO NOT work or play around or under hoist with boat in.

Do NOT leave hoist unattended without first securing wheel.

DO NOT reach through hoist wheel serious personal injury may result.

DO NOT attempt to stop spinning wheel. Serious injury may



Column sticker



Wheel sticker



Since 1979

Craftlander Boat Hoists

Your Craftlander Hoist Limited Warranties

During the terms of the Limited Warranties on your aluminum Craftlander hoist, NuCraft Metal Products, Inc. (hereafter referred to as "NuCraft") covers the cost of all parts and labor needed to repair or replace any NuCraft supplied item that proves defective in material, workmanship or factory preparation. These repairs or replacements (parts and labor) will be made by your dealer at no charge using new or remanufactured parts.

Your Legal Rights Under NuCraft's Limited Warranties

All of the NuCraft Limited Warranties stated in this booklet are the only express written warranties made by NuCraft applicable to the aluminum Craftlander hoist. These Limited Warranties give you specific legal rights and you may also have other rights which vary from state to state. You may have some implied warranties, depending on the state in which your aluminum hoist is registered.

For example, you may have:

1. An "implied warranty of fitness for a particular purpose," (that your hoist is reasonably fit for the general purpose for which it was sold);
2. An "implied warranty of fitness for a particular purpose," (that your hoist is suitable for your special purposes; if your special purposes were specifically disclosed to NuCraft itself-not merely to the distributor or dealer-prior to purchase.)

These implied warranties are limited, to the extent allowed by law, to the time period covered by the written warranties set forth in this publication. Some states do not allow limitations on how long an implied warranty lasts, so the above limitations may not apply to you.

SUBSEQUENT BUYER/OWNER

This Warranty is extended only to the first buyer/owner of the hoist. This is defined as the first legal owner of a NuCraft aluminum Craftlander other than an authorized Distributor or Dealer who has bought the hoist from NuCraft for resale to the public.

HOIST ALTERATION

This warranty does not cover alteration of the aluminum Craftlander hoist, or failure of hoist components caused by such alteration.

PRODUCTION CHANGES

NuCraft and its distributors/dealers reserve the right to make changes in aluminum Craftlander hoists built and/or sold by them at any time without incurring any obligation to make the same or similar changes on hoists previously built and/or sold by them.

Your 2-Year Basic Limited Warranty

WHAT IS COVERED:

The 2-Year "Basic Warranty" covers every NuCraft supplied part on your aluminum Craftlander hoist and aluminum canopy support frame.

The “Basic Warranty” begins on your hoist’s Warranty Start Date. The Warranty Start Date is the earlier of (1) the date you take delivery of your new aluminum Craftlander hoist, OR (2) the date the hoist was first put into service (for example, as a dealer “demo” or as a NuCraft company hoist). The “Basic Warranty” lasts for 2 years (24 months) from this date.

The “Basic Warranty” covers the cost of all parts and labor needed to repair any item on your aluminum Craftlander hoist that is defective in material, workmanship or factory preparation. You pay nothing for these repairs.

Your 15-Year Fabricated Frame & Extrusion Warranty

WHAT IS COVERED:

The “Frame and Extrusion Warranty” covers these parts and components of your aluminum Craftlander hoist frame for 15 years counted from your hoist’s Warranty Start Date:

Extruded Aluminum: columns, rails, spreaders, crossmembers, “Twin Beams”, legs, stands, extensions, canopy inserts, bows, rails, and clamps.

Fabricated: hoist wheel, winch, corner brackets, column guide plates, and footpads.

What your NuCraft Limited Warranties Do Not Cover

Vinyl canopy covers are covered by a 5-Year Limited Warranty by the material manufacturer.

Your NuCraft Limited Warranties do not cover the costs of repairing damage caused by environmental factors or acts of God. “Environmental factors” include such things as airborne fallout, chemicals, tree sap, salt, ocean spray, and water hazards. “Acts of God” include such things as hailstorms, windstorms, tornadoes, sandstorms, lightning, floods and earthquakes.

Your NuCraft Limited Warranties do not cover the costs of repairing damage caused by poor or improper maintenance.

Your NuCraft Limited Warranties do not cover the costs of normal/scheduled maintenance of your aluminum Craftlander hoist. They do not cover the cost of lubrication, replacing cables or fasteners unless done as the result of repair covered by your 2-year “Basic Warranty”.

Your NuCraft Limited Warranties do not cover the costs of repairing damage or conditions caused by fire or accident; by abuse or negligence; by misuse: by tampering with parts; by improper adjustment or alteration; or by any changes made to your aluminum Craftlander hoist; the cost of rental hoist or slip; gasoline, telephone, travel or lodging; the loss of personal or commercial property; the loss of revenue, etc. NOTE: Some states do not allow the exclusion or limitation of incidental or consequential damages, so the above limitations or exclusions may not apply to you.

How To Get Warranty Service for Your Hoist

Please contact the dealer from whom you bought the hoist for warranty service. When contacting your dealer, please provide them with your hoist’s model number, hoist serial number, date of purchase and the nature of the problem. If contact with the dealer is not feasible, please contact NuCraft Metal Products for further assistance.

Proudly Made in Michigan
By
NuCraft Metal Products
402 Southline Rd.
Roscommon, MI 48653